

STELLARI

LED COLLECTION

Outdoor LED Display

DOOH Premium Series, P6.67



Finest Crafted LED

Overview



Designed to last, this Premium LED combines durability with exceptional visual performance. Built around premium components such as gold-wire diodes, best in class chipsets and aerospace Magnesium and Aluminium, it delivers a peak brightness of 8,500 nits and ensures stunning visibility in direct sunlight.

The precision-engineered Full-Magnesium cabinet architecture provides excellent heat dissipation, protecting every component and extending the product's lifetime.

Its advanced colour calibration ensures outstanding uniformity across the entire display surface, while the integrated energy-saving technology maintains low power consumption without compromising image quality.

The result is a reliable LED display, designed for 24/7 operation.

Key Features



Top Picture Quality

- 8,500nits
- 7,680Hz
- Top color uniformity



Long Lifetime Design

- Aerospace Magnesium design
- Lower working temperature
- 40% ↑ heat dissipation



Energy Efficiency

- Top class diode
- Energy saving (≥40%)
- ≥ 91% energy conversion



Easy Installation and Maintenance

- Slim installation depth
- Lightweight cabinet
- Full front service





Key Features



Best in class image quality

Engineered for visual perfection, the Stellari LED delivers rich, accurate colors that remain consistent across the entire display. Its wide viewing angle ensures vivid, crystal-clear images from any perspective, while the high contrast ratio brings every detail to life with remarkable depth and clarity.

The result is a true-to-life visual experience that enhances any environment — setting a new standard in LED display excellence.

Advanced CMS

Built for efficiency, the integrated CMS gives you full control over every display through one intuitive interface. Content updates, scheduling, and real-time monitoring ensure smooth, consistent operation across all locations. With remote access, smart diagnostics, and flexible management tools, Stellari LED stays reliable and effortless to manage anytime, anywhere.



Energy Saving

Designed to accommodate the latest chipset innovation.

Common Cathode Technology reduces operating temperature, minimizing performance degradation and extending component lifespan. It ensures consistent brightness across the entire display, prevents uneven illumination from current differences, and enhances color saturation and contrast for vivid, precise image quality.

Key Features



Designed to Perform

Engineered for the most demanding environments, the Stellari LED combines robust construction with premium electrical components to ensure long-term quality and hassle-free operation.

Tested to perform under the harshest conditions, Stellari LED withstands extreme temperature fluctuations and high humidity without compromising performance.

With minimal downtime and reduced maintenance requirements, it delivers dependable operation and lasting value wherever it's installed.

Outdoor Masterpiece

Crafted from **Aerospace Grade AZ91D die-cast Magnesium**, Stellari LED combines exceptional strength, light weight, and superior corrosion resistance for lasting durability in demanding environments.

This premium alloy offers:

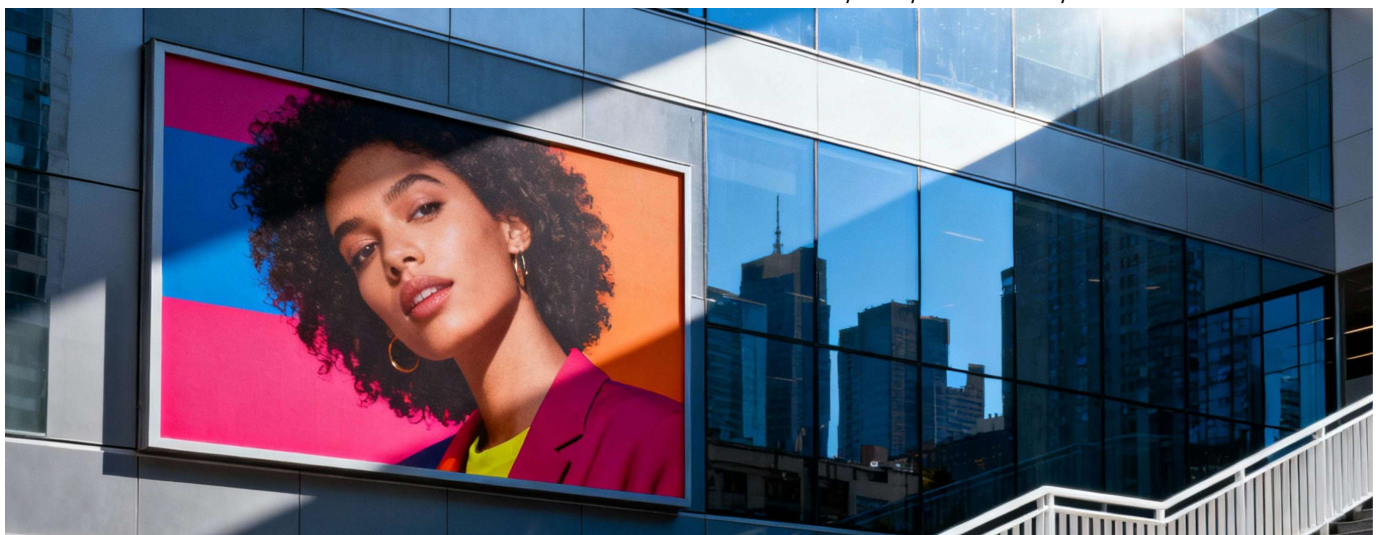
Lightweight: 1.81 g/cm³ density,

High Strength: 160 MPa yield, 250 MPa tensile,

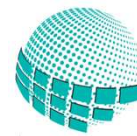
Corrosion Resistant: Built to endure harsh outdoor conditions,

Highly Machinable: Best in class material used in electronics, automotive and medical sector for high precision components manufacturing.

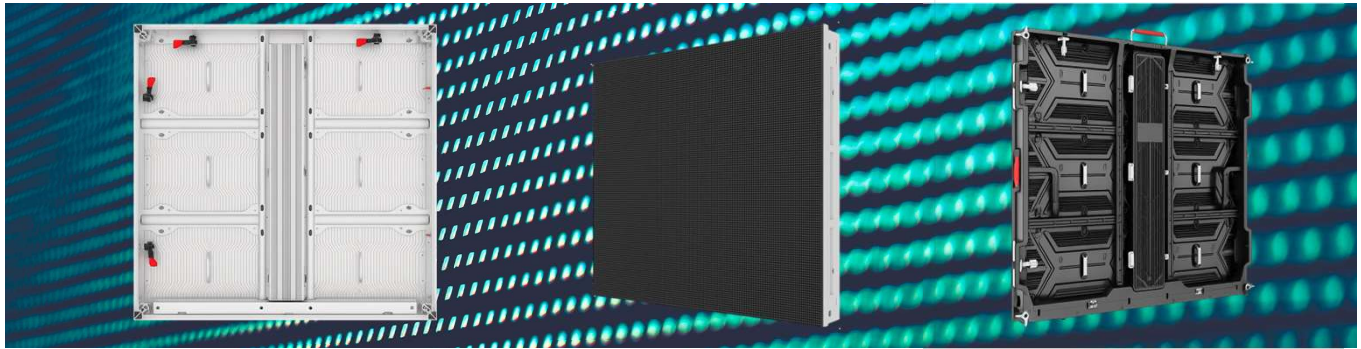
With its innovative design and premium quality materials, Stellari LED delivers proven reliability, backed by a 5-year warranty.



Product Datasheet



STELLARI
LED COLLECTION



	MODEL	DOOH_KLG_P6.67_MGA_CCT	DOOH_NSG_P6.67_MGA_CCT
Physical Parameter	Pixel Pitch	6.67mm	6.67mm
	Pixel Configuration	1R 1G 1B	1R 1G 1B
	Pixel Density	22,500dots/m ²	22,500dots/m ²
	Cabinet Configuration (W*H)	144*144 pixels	144*144 pixels
	Diode Type	Kinglight Gold Wire SMD2727	Nationstar Gold Wire SMD2727
	Diode Density	67,500/m ²	67,500/m ²
	Cabinet Dimensions (W*H*D) in mm	960*960*96	960*960*96
	Module Resolution	72*48 pixels	72*48 pixels
	Module Dimensions (W*H) in mm	480*320	480*320
	Module Configuration (W*H)	2x3	2x3
	Cabinet Weight (KG)	26.5	26.5
Cabinet Material	Aerospace Grade AZ91D Die-Cast Magnesium	Aerospace Grade AZ91D Die-Cast Magnesium	
Optical Parameter	Brightness (After Calibration)	8,500nits	8,500nits
	Contrast Ratio	8,500:1	8,500:1
	Viewing Angle - Horizontal	140°	140°
	Viewing Angle - Vertical	140°	140°
	Bit Depth	16bits	16bits
	Number of Colors	16.7M	16.7M
	Color Temperature - Default	6,500K (+/- 500K)	6,500K (+/- 500K)
	Color Temperature - Adjustable	2,800 ~ 16,000K	2,800 ~ 16,000K
Electrical Parameter	Refresh Rate	≥ 7,680 Hz	≥ 7,680 Hz
	Input Power	200~240V VAC, 50/60 Hz	200~240V VAC, 50/60 Hz
	Power Consumption Maximum	537 W	537 W
	Power Consumption Typical	160	160 W
Operation Conditions	Driving Mode	1/6 Scan	1/6 Scan
	Working Temperature/ Humidity	-30°C to 50°C / 10~90%	-30°C to 50°C / 10~90%
	Storage Temperature/Humidity	-30°C to 60°C / 10~90%	-30°C to 60°C / 10~90%
	Cooling Techology	Module:6061 Aerospace-Grade Aluminum	Module:6061 Aerospace-Grade Aluminum
	IP Rating (Front/Rear)	IP66/IP66	IP66/IP66
	LED Lifetime	>100,000 hours	>100,000 hours
	Monitoring Function	Cabinet Temperature, Receiving Card Status	Cabinet Temperature, Receiving Card Status
Service	Service and Maintenance	Full Front&Rear	Full Front&Rear
Certification	Certification	EMC Class A, CE, ROHS, LVD 2014/35/EU	EMC Class A, CE, ROHS, LVD 2014/35/EU
	Certification	CFR47, FCC 15/B, ANSI C63.4:2014	CFR47, FCC 15/B, ANSI C63.4:2014
Package	Box Type	Heavy Duty Wooden Box	Heavy Duty Wooden Box
	Stacking	Maximum 2 Vertically	Maximum 2 Vertically
Warranty	Warranty	5 Years	5 Years

Copyright © 2025 QUBIQ DIGITAL SOLUTIONS SRL. All rights reserved. Trademark pending registration.

Contact: sales@stellari.eu | +40 754 044 017