



STELLARI

LED COLLECTION

Outdoor LED Display

DOOH Premium Series, P10



Finest Crafted LED

Overview



Designed to last, this Premium LED combines durability with exceptional visual performance. Built around premium components such as cooper-wire diodes, best in class chipsets and aerospace aluminium, it delivers a peak brightness of 6,000 nits and ensures stunning visibility in direct sunlight.

The precision-engineered full-aluminium architecture provides excellent heat dissipation, protecting every component and extending the product's lifetime.

Its advanced colour calibration ensures outstanding uniformity across the entire display surface, while the integrated energy-saving technology maintains low power consumption without compromising image quality.

The result is a reliable LED display, designed for 24/7 operation.

Key Features



Top Picture Quality

- 6,000nits
- 7,680Hz
- Top color uniformity



Long Lifetime Design

- Aerospace aluminum design
- Lower working temperature
- Improved heat dissipation



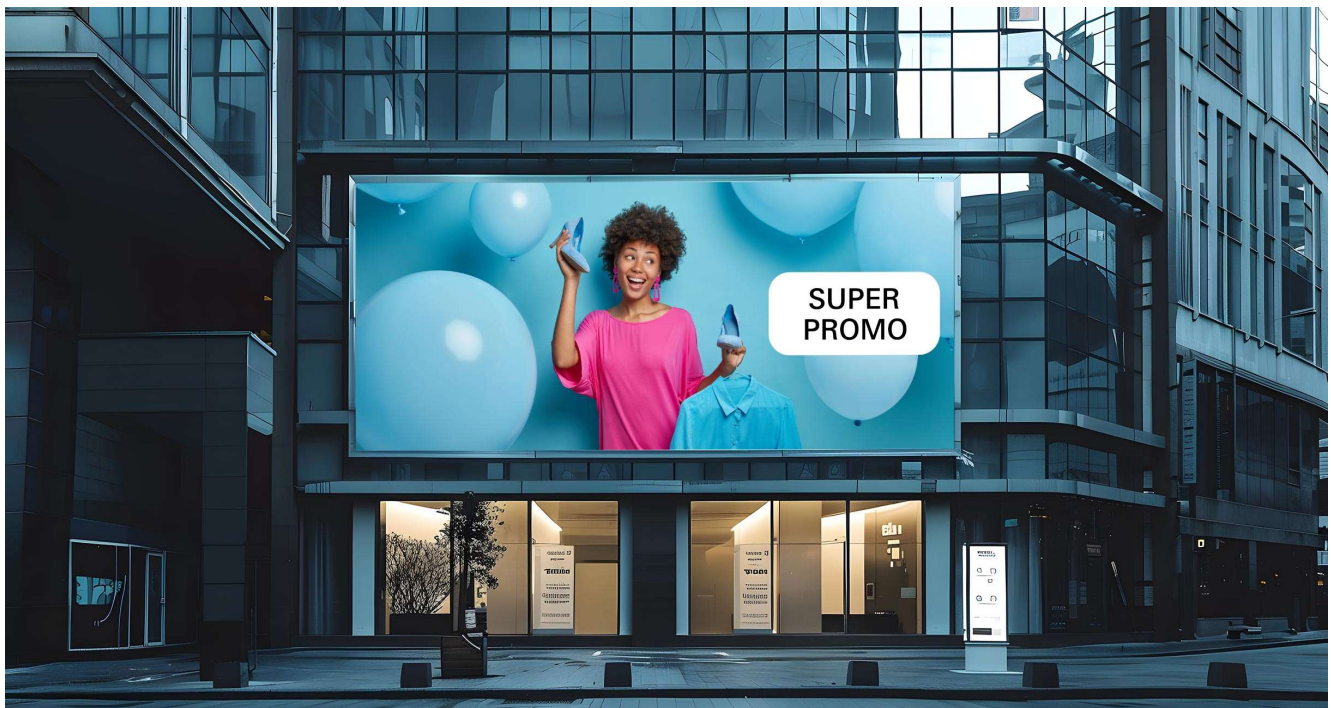
Energy Efficiency

- Top class diode
- Energy saving (≥30%)
- ≥ 91% energy conversion



Easy Installation and Maintenance

- Slim installation depth
- Lightweight cabinet
- Full front service





Key Features



Best in class image quality

Engineered for visual perfection, the Stellari LED delivers rich, accurate colors that remain consistent across the entire display. Its wide viewing angle ensures vivid, crystal-clear images from any perspective, while the high contrast ratio brings every detail to life with remarkable depth and clarity.

The result is a true-to-life visual experience that enhances any environment — setting a new standard in LED display excellence.

Advanced CMS

Built for efficiency, the integrated CMS gives you full control over every display through one intuitive interface. Content updates, scheduling, and real-time monitoring ensure smooth, consistent operation across all locations. With remote access, smart diagnostics, and flexible management tools, Stellari LED stays reliable and effortless to manage anytime, anywhere.



Energy Saving

Designed to accommodate the latest chipset innovation.

Common Cathode Technology reduces operating temperature, minimizing performance degradation and extending component lifespan. It ensures consistent brightness across the entire display, prevents uneven illumination from current differences, and enhances color saturation and contrast for vivid, precise image quality.

Key Features



Designed to Perform

Engineered for the most demanding environments, the Stellari LED combines robust construction with premium electrical components to ensure long-term quality and hassle-free operation.

Tested to perform under the harshest conditions, Stellari LED withstands extreme temperature fluctuations and high humidity without compromising performance.

With minimal downtime and reduced maintenance requirements, it delivers dependable operation and lasting value wherever it's installed.

Outdoor Masterpiece

Crafted from **6061 aerospace-grade aluminium**, Stellari LED combines exceptional strength, light weight, and superior corrosion resistance for lasting durability in demanding environments.

This premium alloy offers:

Lightweight: 2.7 g/cm³ density,

High Strength: 276 MPa yield, 310 MPa tensile,

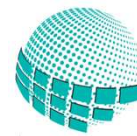
Corrosion Resistant: Built to endure harsh outdoor conditions,

Highly Machinable: Perfect for precision manufacturing.

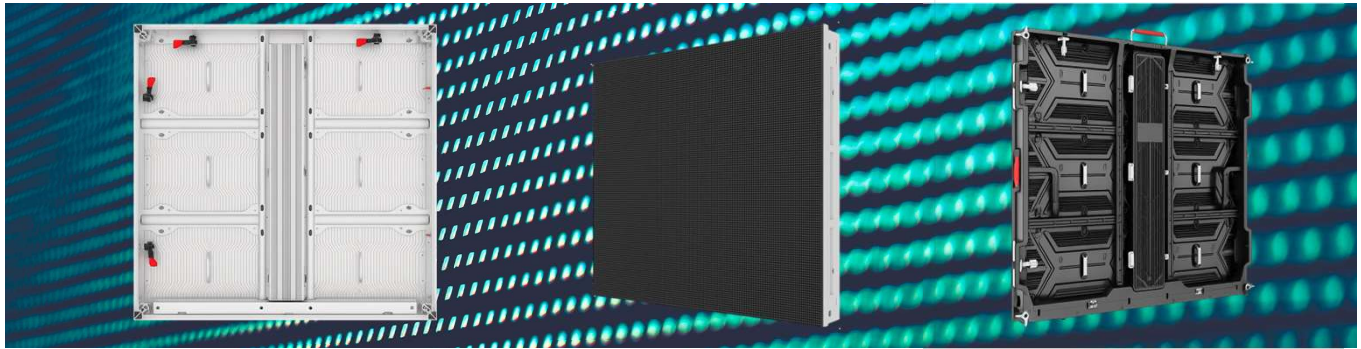
With its innovative design and premium quality materials, Stellari LED delivers proven reliability, backed by a 5-year warranty.



Product Datasheet



STELLARI
LED COLLECTION



MODEL	DOOH_KLC_P10_CCT	
Physical Parameter	Pixel Pitch	10mm
	Pixel Configuration	1R 1G 1B
	Pixel Density	10,000dots/m ²
	Cabinet Configuration (W*H)	96*96 pixels
	Diode Type	Kinglight Cooper Wire SMD3535
	Diode Density	30,000/m ²
	Cabinet Dimensions (W*H*D) in mm	960*960*96
	Module Resolution	48*32 pixels
	Module Dimensions (W*H) in mm	480*320
	Module Configuration (W*H)	2x3
	Cabinet Weight (KG)	26.5
Cabinet Material	6061 Aerospace-Grade Aluminum	
Optical Parameter	Brightness (After Calibration)	6,50nits
	Contrast Ratio	8,500:1
	Viewing Angle - Horizontal	140°
	Viewing Angle - Vertical	140°
	Bit Depth	16bits
	Number of Colors	16.7M
	Color Temperature - Default	6,500K (+/- 500K)
	Color Temperature - Adjustable	2,800 ~ 16,000K
Electrical Parameter	Refresh Rate	≥ 7,680 Hz
	Input Power	200~240V VAC, 50/60 Hz
	Power Consumption Maximum	550 W
	Power Consumption Typical	180 W
Operation Conditions	Driving Mode	1/2 Scan
	Working Temperature/ Humidity	-30°C to 50°C / 10~90%
	Storage Temperature/Humidity	-30°C to 60°C / 10~90%
	Cooling Techology	Module:UV Resistant Plastic Backshell
	IP Rating (Front/Rear)	IP66/IP65
	LED Lifetime	>100,000 hours
Service	Monitoring Function	Cabinet Temperature, Receiving Card Status
	Service and Maintenance	Full Front&Rear
Certification	Certification	EMC Class A, CE, ROHS, LVD 2014/35/EU
	Certification	CFR47, FCC 15/B, ANSI C63.4:2014
Package	Box Type	Heavy Duty Wooden Box
	Stacking	Maximum 2 Vertically
Warranty	Warranty	3 Years

Copyright © 2025 QUBIQ DIGITAL SOLUTIONS SRL. All rights reserved. Trademark pending registration.

Contact: sales@stellari.eu | +40 754 044 017