

STELLARI

LED COLLECTION

Indoor LED Display

Poster DSV Series, Twin Super Bright P2.6



Overview



Designed to outperform, this exotic Twin Super Bright Poster LED combines exceptional quality tiles with a super light weight chassis, making it the perfect solution for impossible Poster LED hanging scenarios.

The world brightest double side LED delivers a twin brightness of 4,500 & 4,500 nits and ensures outstanding visibility in any retail environment.

Its advanced colour calibration ensures outstanding uniformity across the entire display surface without compromising image quality.

The result is a truly spectacular LED display.

Key Features



Enhanced Picture Quality

- Twin 4,500&4,500nits
- Ventilated Tiles
- Top color uniformity



Innovative Design

- Aerospace aluminum design
- 88mm thickness
- 27KG/SQM



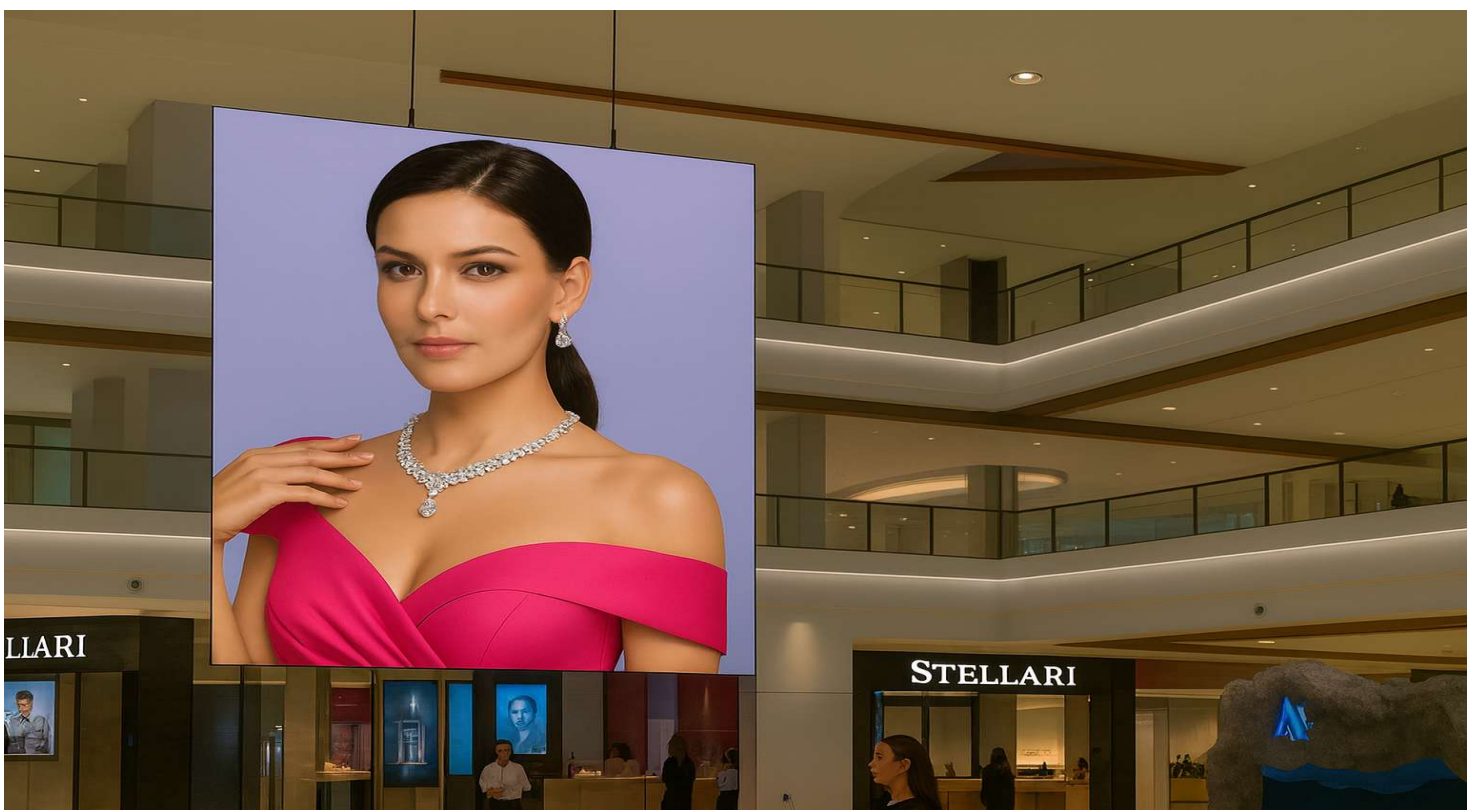
Energy Efficiency

- Top class diode
- Energy saving
- ≥ 91% energy conversion



Easy Installation and Maintenance

- Easy to deploy
- Lightweight cabinet
- Full front service



Key Features



Best in class image quality

Engineered for visual perfection, the Stellari LED delivers rich, accurate colors that remain consistent across the entire display. Its wide viewing angle ensures vivid, crystal-clear images from any perspective, while the high contrast ratio brings every detail to life with remarkable depth and clarity.

The result is a true-to-life visual experience that enhances any environment — setting a new standard in LED display excellence.

Advanced CMS

Built for efficiency, the integrated CMS gives you full control over every display through one intuitive interface. Content updates, scheduling, and real-time monitoring ensure smooth, consistent operation across all locations. With remote access, smart diagnostics, and flexible management tools, Stellari LED stays reliable and effortless to manage anytime, anywhere.



Key Features



Designed to Perform

Engineered for the most demanding environments, the Stellari LED combines robust construction with premium electrical components to ensure long-term quality and hassle-free operation.

Tested to perform under the harshest indoor conditions, Stellari LED withstands dust and and high humidity without compromising performance.

With minimal downtime and reduced maintenance requirements, it delivers dependable operation and lasting value wherever it's installed.

Indoor Masterpiece

Crafted from **6061 aerospace-grade aluminium**, Stellari LED combines exceptional strength, light weight, and superior corrosion resistance for lasting durability in demanding environments.

This premium alloy offers:

Lightweight: 2.7 g/cm³ density,

High Strength: 276 MPa yield, 310 MPa tensile,

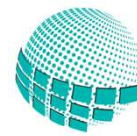
Corrosion Resistant: Built to endure harsh outdoor conditions,

Highly Machinable: Perfect for precision manufacturing.

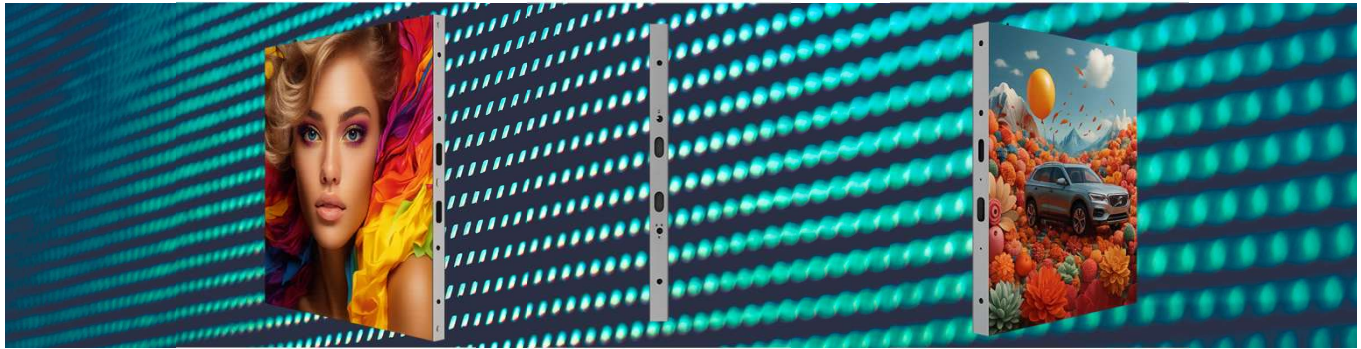
With its innovative design and premium quality materials, Stellari LED delivers proven reliability, backed by a 5-year warranty.



Product Datasheet



STELLARI
LED COLLECTION



	MODEL	DVSE NSC P2.6
Physical Parameter	Pixel Pitch	2.6mm
	Pixel Configuration	1R 1G 1B
	Pixel Density	147,456dots/m ²
	Cabinet Configuration (W*H)	384*384/192 pixels
	Diode Type	Nationstar Cooper Wire SMD1415
	Diode Density	442,368/m ²
	Cabinet Dimensions (W*H*D) in mm	1000*1000/500*88
	Module Resolution	192*24 pixels
	Module Dimensions (W*H) in mm	500*62.5
	Module Configuration (W*H)	2x16
	Cabinet Weight (KG)	27
	Cabinet Material	6061 Aerospace-Grade Aluminum
Optical Parameter	Brightness (After Calibration)	4,500nits/4,500nits
	Contrast Ratio	8,500:1
	Viewing Angle - Horizontal	140°
	Viewing Angle - Vertical	140°
	Bit Depth	14bits
	Number of Colors	16.7M
	Color Temperature - Default	6,500K (+/- 500K)
	Color Temperature - Adjustable	2,800 ~ 16,000K
	Refresh Rate	≥ 3,840 Hz
Electrical Parameter	Input Power	200~240V VAC, 50/60 Hz
	Power Consumption Maximum	1600 W
	Power Consumption Typical	480 W
	Driving Mode	1/24 Scan
Operation Conditions	Working Temperature/ Humidity	-20°C to 60°C / 10~90%
	Storage Temperature/Humidity	-30°C to 60°C / 10~90%
	Cooling Technology	Proprietary Air Flow Design
	IP Rating (Front/Rear)	IP30/IP30
	LED Lifetime	>100,000 hours
	Monitoring Function	Cabinet Temperature, Receiving Card Status
Service	Service and Maintenance	Full Front
Certification	Certification	EMC Class A, CE, ROHS, LVD 2014/35/EU
	Certification	CFR47, FCC 15/B, ANSI C63.4:2014
Package	Box Type	Heavy Duty Wooden Box
	Stacking	Maximum 2 Vertically
Warranty	Warranty	5 Years

Copyright © 2025 QUBIQ DIGITAL SOLUTIONS SRL. All rights reserved. Trademark pending registration.

Contact: sales@stellari.eu | +40 754 044 017