



STELLARI

LED COLLECTION

Indoor LED Display

Poster DSG Series, Twin Bright P2.6



Overview



Designed to outperform, this exotic Twin Bright Poster LED combines exceptional quality tiles with a super light weight chassis, making it the perfect solution for impossible Poster LED hanging scenarios.

The world slimmest double side LED delivers a twin brightness of 3,000 & 3,000 nits and ensures optimal visibility in any retail environment.

Its advanced colour calibration ensures outstanding uniformity across the entire display surface without compromising image quality.

The result is a truly spectacular LED display.

Key Features



Enhanced Picture Quality

- Twin 3,000&3,000nits
- GOB Tiles
- Top color uniformity



Innovative Design

- Aerospace aluminum design
- 30mm thickness
- 30KG/SQM



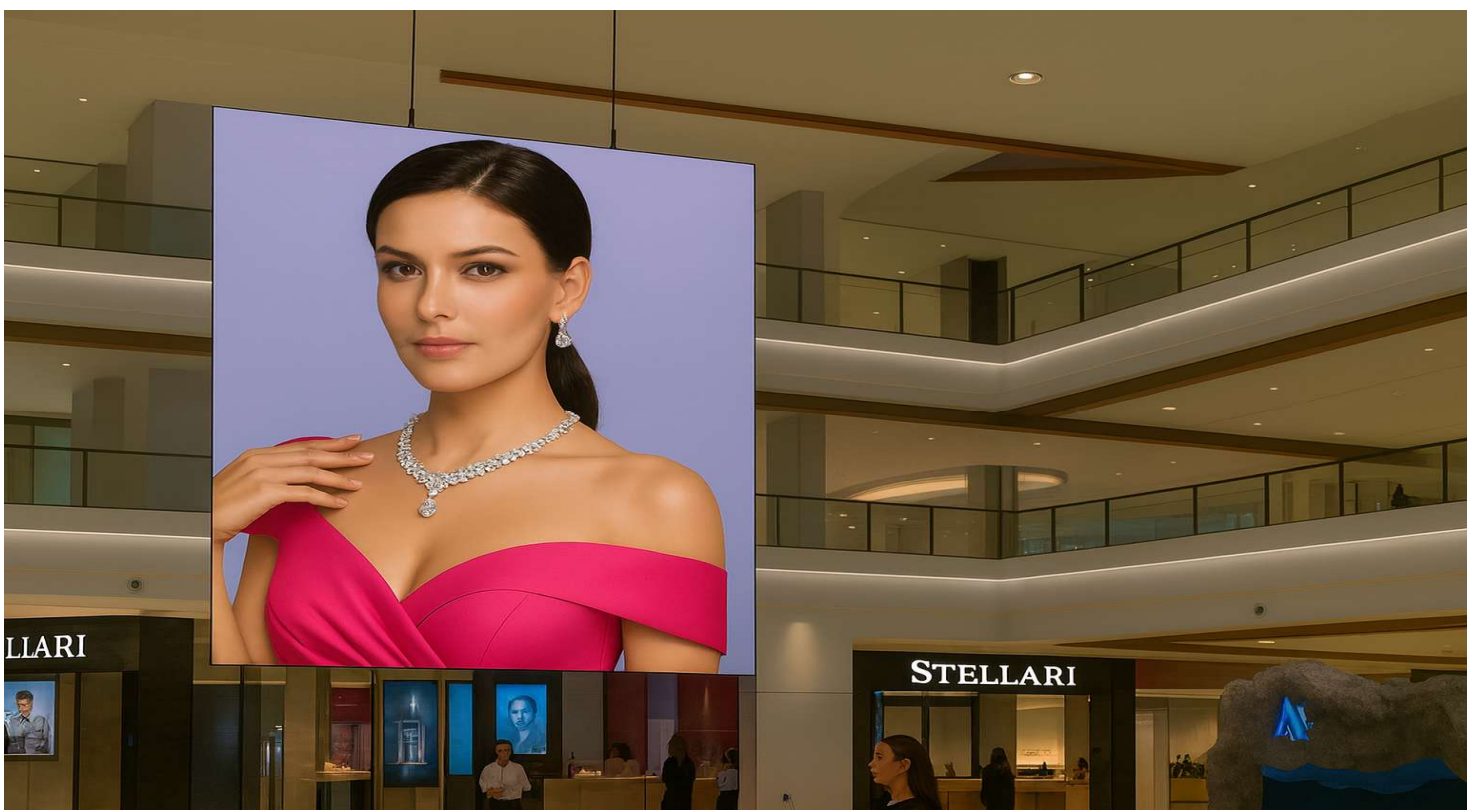
Energy Efficiency

- Top class diode
- Energy saving
- ≥ 91% energy conversion



Easy Installation and Maintenance

- Easy to deploy
- Lightweight cabinet
- Full front service



Key Features



Best in class image quality

Engineered for visual perfection, the Stellari LED delivers rich, accurate colors that remain consistent across the entire display. Its wide viewing angle ensures vivid, crystal-clear images from any perspective, while the high contrast ratio brings every detail to life with remarkable depth and clarity.

The result is a true-to-life visual experience that enhances any environment — setting a new standard in LED display excellence.

Advanced CMS

Built for efficiency, the integrated CMS gives you full control over every display through one intuitive interface. Content updates, scheduling, and real-time monitoring ensure smooth, consistent operation across all locations. With remote access, smart diagnostics, and flexible management tools, Stellari LED stays reliable and effortless to manage anytime, anywhere.



Key Features



Designed to Perform

Engineered for the most demanding environments, the Stellari LED combines robust construction with premium electrical components to ensure long-term quality and hassle-free operation.

Tested to perform under the harshest indoor conditions, Stellari LED withstands dust and and high humidity without compromising performance.

With minimal downtime and reduced maintenance requirements, it delivers dependable operation and lasting value wherever it's installed.

Indoor Masterpiece

Crafted from **6061 aerospace-grade aluminium**, Stellari LED combines exceptional strength, light weight, and superior corrosion resistance for lasting durability in demanding environments.

This premium alloy offers:

Lightweight: 2.7 g/cm³ density,

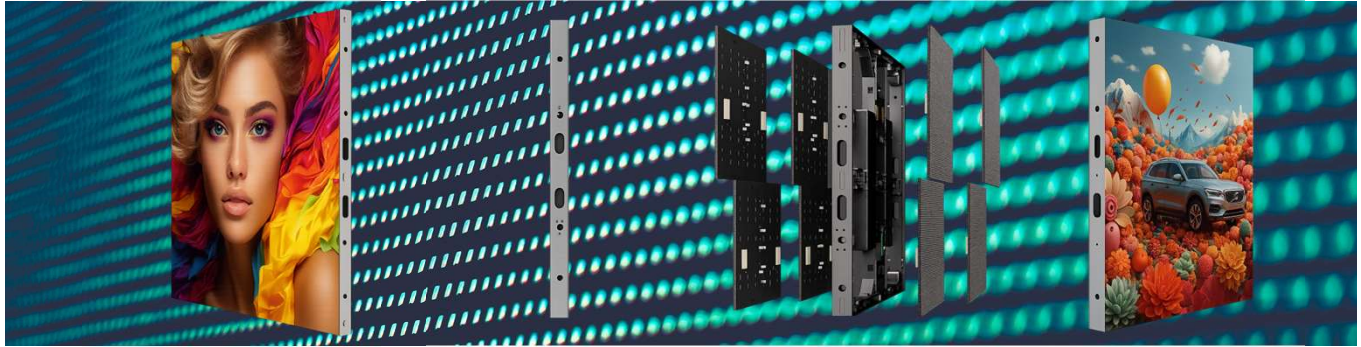
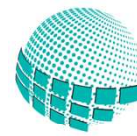
High Strength: 276 MPa yield, 310 MPa tensile,

Corrosion Resistant: Built to endure harsh outdoor conditions,

Highly Machinable: Perfect for precision manufacturing.

With its innovative design and premium quality materials, Stellari LED delivers proven reliability, backed by a 5-year warranty.





MODEL	DSG 3.3 KLC P2.6	
Physical Parameter	Pixel Pitch	2.6mm
	Pixel Configuration	1R 1G 1B
	Pixel Density	147,456dots/m ²
	Cabinet Configuration (W*H)	192*192 pixels
	Diode Type	Kinglight Cooper Wire SMD2020
	Diode Density	442,368/m ²
	Cabinet Dimensions (W*H*D) in mm	500*500*30
	Module Resolution	96*96 pixels
	Module Dimensions (W*H) in mm	250*250
	Module Configuration (W*H)	2x2
	Cabinet Weight (KG)	7.5
Optical Parameter	Cabinet Material	6061 Aerospace-Grade Aluminum
	Brightness (After Calibration)	3,000nits/3,000nits
	Contrast Ratio	5,000:1
	Viewing Angle - Horizontal	160°
	Viewing Angle - Vertical	160°
	Bit Depth	16bits
	Number of Colors	16.7M
	Color Temperature - Default	6,500K (+/- 500K)
Electrical Parameter	Color Temperature - Adjustable	2,800 ~ 16,000K
	Refresh Rate	≥ 7,680 Hz
	Input Power	200~240V VAC, 50/60 Hz
	Power Consumption Maximum	780 W
Operation Conditions	Power Consumption Typical	300 W
	Driving Mode	1/32 Scan
	Working Temperature/ Humidity	-20°C to 50°C / 10~90%
	Storage Temperature/Humidity	-30°C to 60°C / 10~90%
	Cooling Technology	Proprietary Air Flow Design
	IP Rating (Front/Rear)	IP30/IP30
Service	LED Lifetime	>100,000 hours
	Monitoring Function	Cabinet Temperature, Receiving Card Status
Certification	Service and Maintenance	Full Front
	Certification	EMC Class A, CE, ROHS, LVD 2014/35/EU
Package	Certification	CFR47, FCC 15/B, ANSI C63.4:2014
	Box Type	Heavy Duty Wooden Box
Warranty	Stacking	Maximum 2 Vertically
	Warranty	5 Years